



**Bromley College of Further &  
Higher Education  
May 2016  
Sam Parrett OBE  
Principal and Chief Executive**



## In a tweet

A great place to study and work #beinspired  
#realskillsfortherealworld

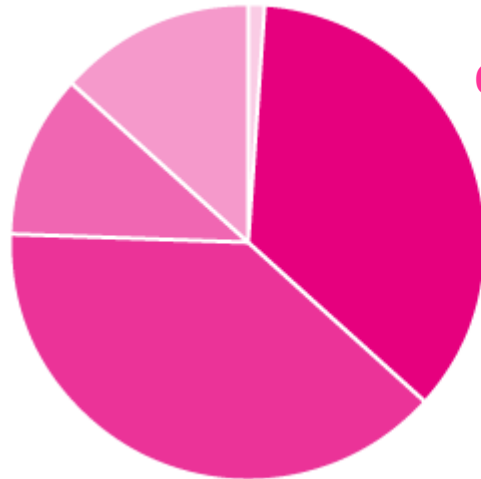


# Vision & Mission

- ‘The College’s vision is to be recognised, valued and respected in our communities as **listening, responsive and relevant**. We will be recognised as an outstanding centre of vocational and educational excellence and will play a leading role in the economic and social development of the area.
- The College’s mission is **‘delivering real skills for the real world’**. This brings to life the absolute focus on relevant, up to date, high quality skills that meet the needs of the local business community.’



# Highlights:



**Our student population breakdown**

- 14-16 – 100
- 16-18 – 3,200
- 19+ – 3,500
- Higher Education – 1,000
- Apprentices – 1,200

Ofsted 2015  
14-16 College  
Monitoring Report - 'Good'

Ofsted 2013

'Good' with 'Outstanding'  
Features

Number of Staff

**700**

QAA

Highest Grade  
Awarded

Turnover

**£30m**

SFA Financial Health

**GOOD**

**40%**

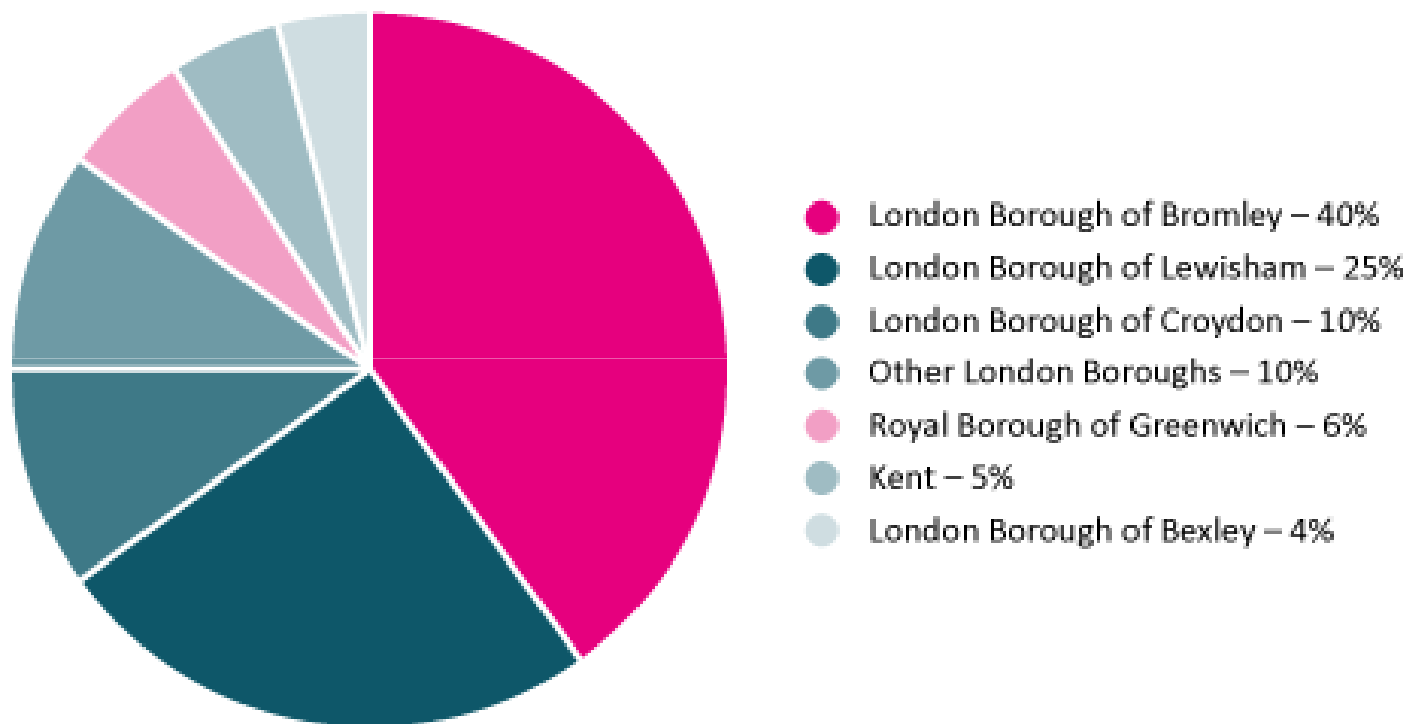
of our students  
live in Bromley

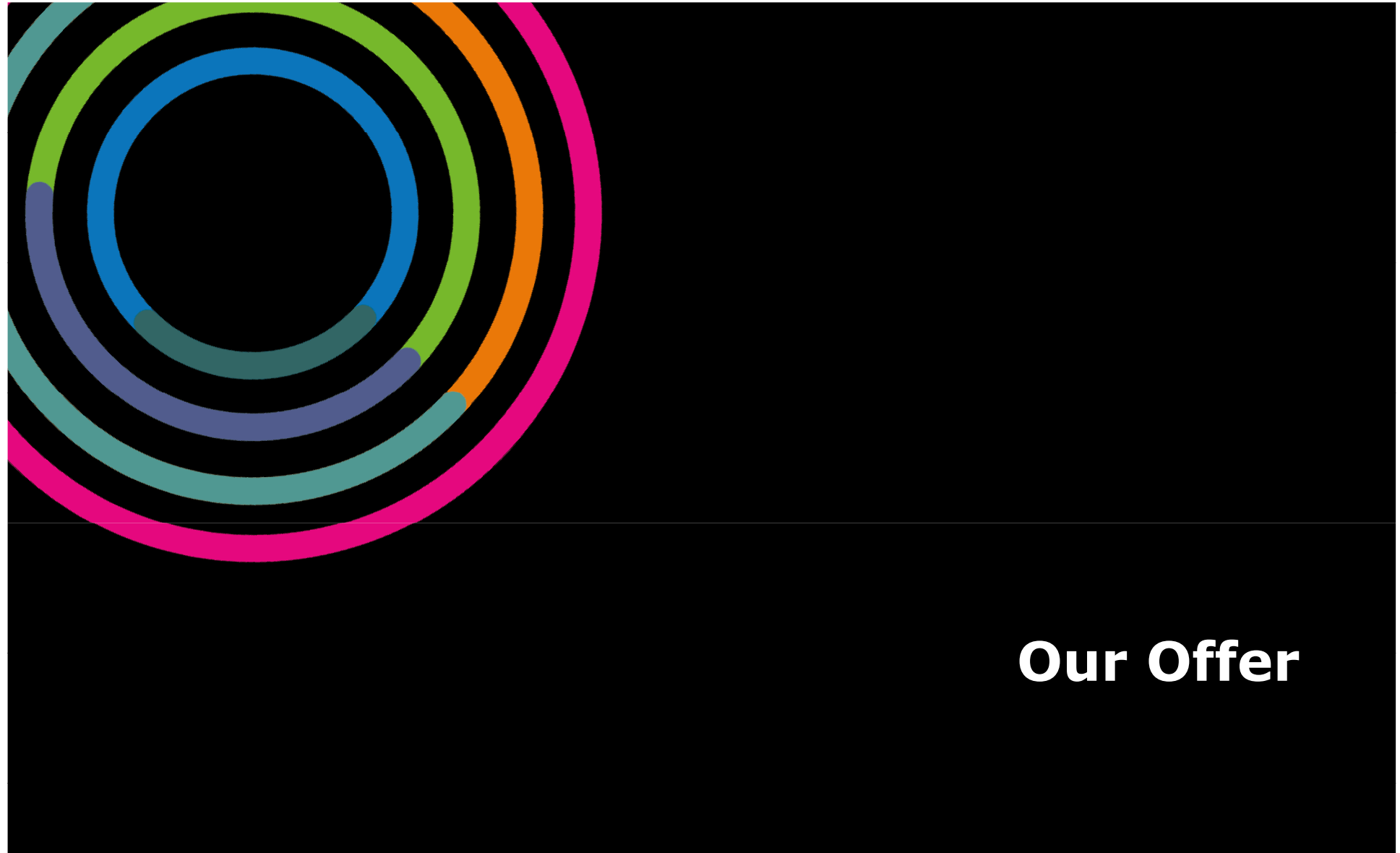
**6%**

of our students  
live in Greenwich



# Our student population across South East London 2015





# Our Offer

**BROMLEY COLLEGE**  
OF FURTHER & HIGHER EDUCATION

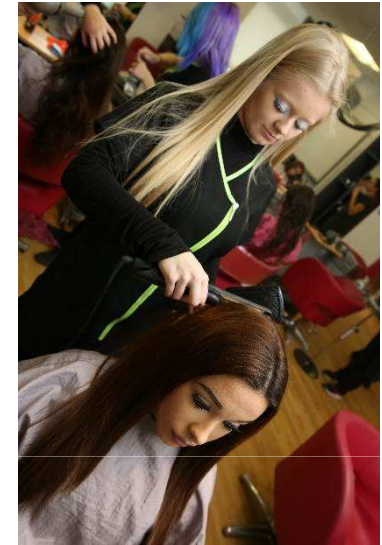
# Bromley College of Further & Higher Education

- Further Education
- Bromley College University Centre
- Bromley Trust Academy
- Apprenticeships
- Nido Volans Centre
- Careers College (BR6)
- Bromley Business School
- Innovation Centre
- Bromley Educational Trust our Multi Academy Trust
- Bromley University Technical College



# Further Education

- Vocational specialists for 16-19 and 19+
- Full time and part time courses
- Industry-standard facilities
- Expert teaching staff
- A range of qualifications to suit all interests and abilities





# Bromley College University Centre

- Degrees, HNCs and professional courses
- All degrees validated by top universities
- Full or part-time flexible programs to suit all
- Small class sizes
- Industry-relevant facilities and practices
- Lower tuition fees
- Local and convenient



UNIVERSITY  
of  
GREENWICH



Canterbury  
Christ Church  
University

---

**BROMLEY COLLEGE**  
OF FURTHER & HIGHER EDUCATION



# Bromley Technical Academy

- For Year 10 and 11 students
- A varied and inspiring curriculum combining GCSEs with specialist vocational skills
- Small classes (around 18 students)
- Teaching from industry experts
- Industry-standard facilities
- Great employer links, career-focused



# Apprenticeship & Traineeships

**A great way to learn on the job - earning a salary whilst gaining a qualification**

- We currently have c1,200 Apprenticeships
- We plan to increase this by 100% in 2017/18
- Over 500 employers involved
- A range of traineeships also available for learners to prepare for work or an Apprenticeship



# Nido Volans

## Specialist provision for around 150 students with Special Educational Needs and Disabilities

- Employability programmes
- Personal progression pathways
- 97% Success Rates
- Employment outcomes average 32% against London average of 6%
- DfE Pathfinder Status



# Hospitality, Food & Enterprise Career College

- London's first Career College (est.2014)
- Curriculum is designed and part-delivered by top employers within the hospitality industry
- Industry-standard training kitchens
- Excellent work experience / shadowing opportunities
- BR6 Restaurant – real commercial experience
- BR6 Bistro (October 2016)



Career  
Colleges®

14-19 Preparing young people for work

**BROMLEY COLLEGE**  
OF FURTHER & HIGHER EDUCATION



# Innovation Centre

## **Supports small businesses and start-ups with:**

- A series of flexible training programs, delivered both online and face to face
- Desk, meeting room and office hire
- Reception services and mediation support
- Access to a talent pool of business undergraduates for research, internship and work experience
- Based at Orpington



# Bromley Business School

- Offering a range of business courses across all levels from FE to Degrees
- Located at Orpington Campus
- Supporting local and regional economic growth
- Driven by an employer advisory board
- Ensuring that students of all levels can progress into sustainable employment



# Bromley Educational Trust est. 2013

- **Bromley Trust Academy** - specialist Alternative Provision at Midfield Campus (4-11) and Hayes Campus (11-16)
- **Bromley Beacon Academy** - SEHM provision – currently boys. 11-16 will be mixed 7-18 from September 2016
- Proposed merger with **William Willett Learning Trust** underway: Mead Road & Coopers School
- **Bromley Futures Academy** (Wave 11 Free School application)





# Bromley UTC

- **Health & Wellbeing Sciences**
- In partnership with King's College Hospital, Nuffield Health, Mytime Active, Oxleas NHS Foundation Trust
- Outstanding technical education
- Planned 2018 opening
- Will transfer to MAT in September 2016
- Will extend from 14-18 to 11-19
- Will be based at Bromley South



University  
Technical  
Colleges®



# Every Learner Counts

- High Aspirations and Expectations
- Preparation for Employment
- English and Maths
- Real Skills for the Real World
- The Bromley Advantage



# Maths & English

- Centre of Excellence for Maths & English with specialist Hubs at each College
- £500k investment in teaching staff and facilities
- 300% increase in the number of students studying Maths & English
- Excellent success rates above NA for 16+



## Industry – standard facilities

- **‘enhance’** - Hair & Beauty Salon and learning company model
- **BR6 Restaurant** - student-led, commercial operation with additional training kitchens
- **The Life Centre** - £4m gym and sports hall
- **Peter Jones Enterprise Academy** - offering enterprise courses and business skills at Level 2 and 3



# Bromley Advantage

Our pioneering programme to equip students with:

- **Social Skills**
- **Employability skills**
- **Enterprise skills**
- **Digital Skills**
- **Confidence**





The Future  
South East London Colleges Group  
August 2016

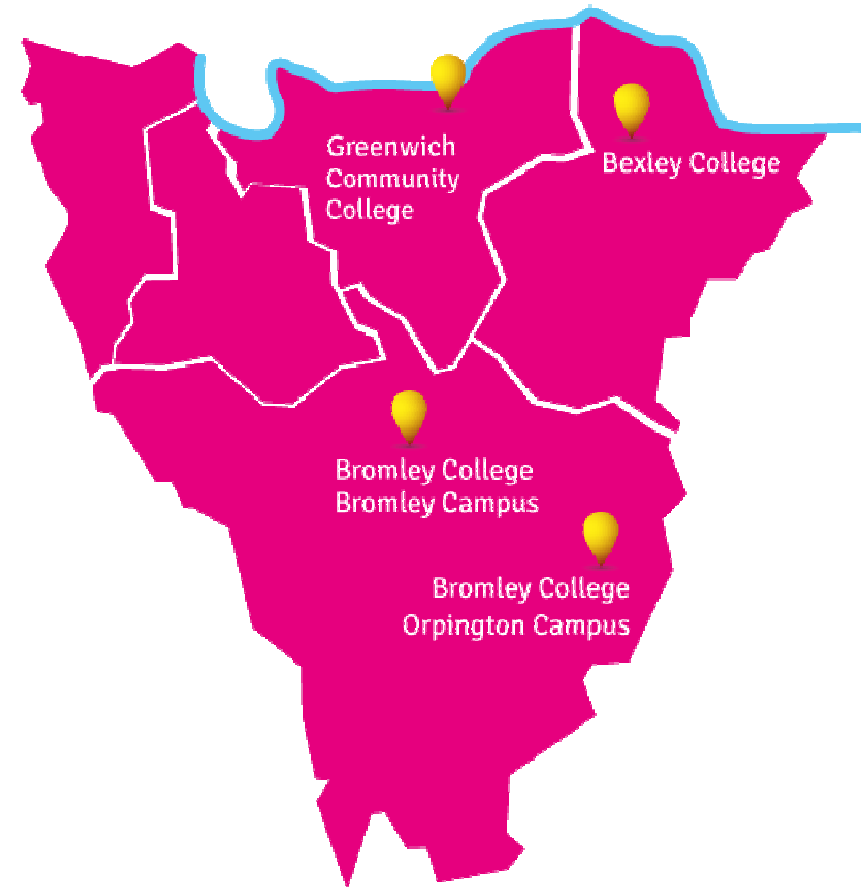
# Who are we?

**South East London College Group**, incorporating three colleges (as of 1 August 2016):

- Bromley College of Further & Higher Education
- Bexley College
- Royal Greenwich College
- South East London Apprenticeship Company



This:-  
South East London  
Colleges Group?





# Key statistics

Our new merged college will have:

- c£50m turnover (excluding BET)
- c13,000 students
- c1200 staff
- 8 sites (14 including BET)



# Our Ambition for 2020

- A strong dynamic and responsive College – to employers, communities, learners and staff.
- The College seen as part of the solution and the first place people turn to for training and education.
- An enterprise and employability skills ‘wrap-around’ curriculum (Bromley Advantage).
- A new College with ‘visible’ sector specialisms that are aligned to the business needs of the area and are easy for employers to connect to.
- New and improved services and facilities where efficiencies gained will be reinvested.
- A greater opportunity to progress from Level 1 up to Level 4 and in some areas Levels 5 and 6.
- More flexible and affordable programmes through new delivery models and the identification of new finance arrangements.
- Outstanding partnerships and relationships with schools, colleges, universities, local authorities and employers.
- Support for staff through CPD, mentoring and first-class management.

